

SYMFONISK

Release the sound of your home



Sound has the ability to change the atmosphere at home dramatically. So, turning a grey day into a great day is only a touch of a button away.

SONOS



What role does music play in your life? Do you belong to the 74 per cent who feel that music reduces stress? Or the ones who think certain songs mean more to creativity than a cup of coffee? There are plenty of studies that show that music makes people feel good, and together with Sonos, we've further developed our SYMFONISK series – WiFi speakers that make sound a part of your interior.

Speakers to create atmosphere at home, in every room.

The SYMFONISK speakers are a collaboration between IKEA and Sonos, so it easily integrates with other products from Sonos.

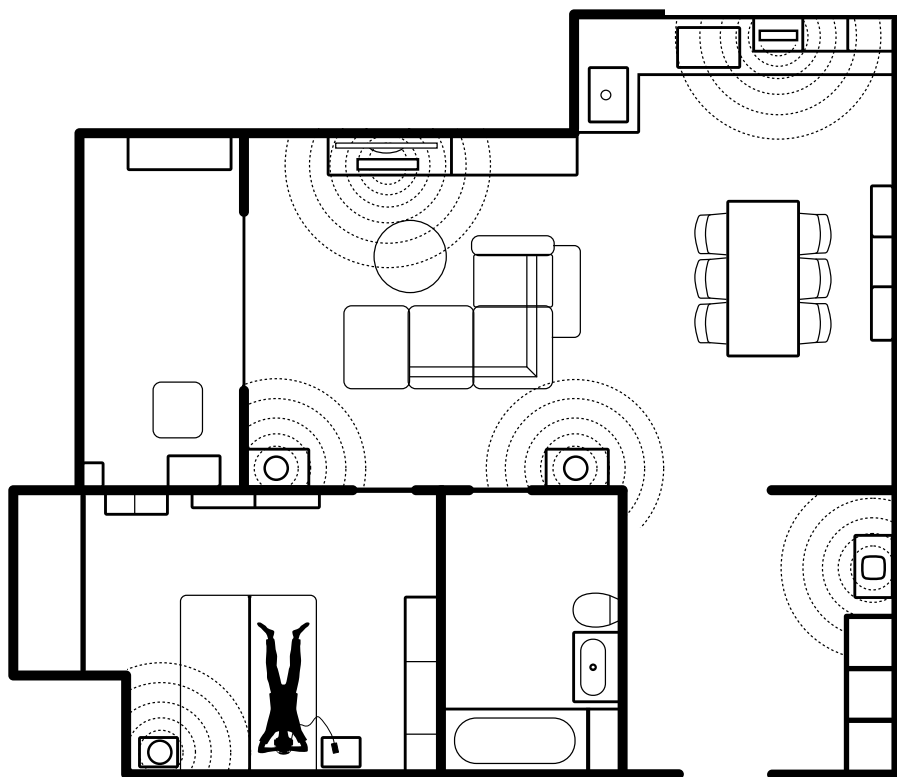
The SYMFONISK picture frame with WiFi speaker makes sound blend in with your other decor and adds a uniform and stylish touch to your home. Choose from various interchangeable fronts, hang it on the wall or put it on the floor. Then enjoy fantastic sound.



Why WiFi?

Want to fill your whole home with music? WiFi is your best solution. It streams music from your network instead of your phone or tablet. So you never miss a beat. You can stream music, podcasts and radio via WiFi without interruptions from phone

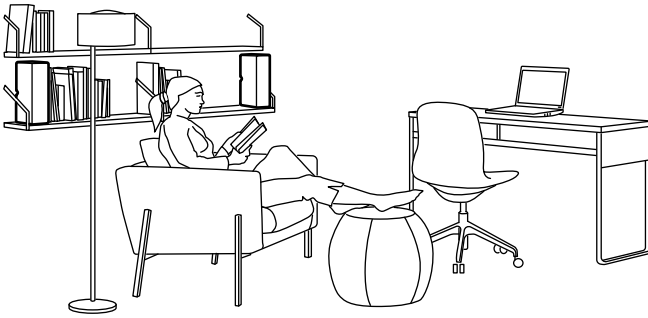
calls or notifications. The music keeps playing even when your phone or tablet is not around.



Creating a stereo pair

You can group two identical SYMFONISK speakers in the same room to create a wider stereo experience. It also works with 1 floor lamp speaker and 1 speaker lamp base

from the SYMFONISK series. In this configuration, one speaker serves as the left channel and the other serves as the right channel.



For the best stereo sound experience, we recommend placing the two SYMFONISK speakers roughly 2.5 to 3 m (8 to 10 feet) apart.

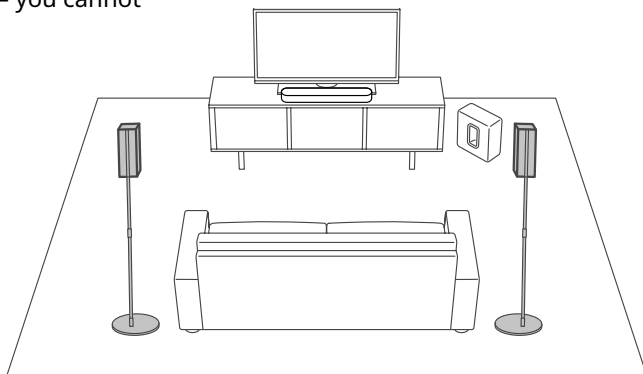


Home theatre system

You can easily pair two speakers, such as two SYMFONISK table lamp speakers, with a Sonos home theatre product to function as left and right surround channels in your Sonos surround sound experience. Make sure the speakers you want to add are the same – you cannot

combine a SYMFONISK table lamp and a SYMFONISK bookshelf speaker to function as surround speakers. The only exception is that you can stereo pair 1 floor lamp speaker and 1 speaker lamp base from the SYMFONISK series.

To choose your Sonos home theatre product, visit the Sonos website.



Sound that blends in

Sonos are experts in sound experience, and at IKEA we have deep knowledge in home furnishing and life at home. It's a really good combination to help more people enjoy streamed music and radio without speakers that steal space. We challenge each other and find new solutions. Like the combined picture frame and WiFi speaker – none of us would have been able to develop it on our own.

We were able to keep the thin edge of the picture frame while hiding a deeper acoustic volume behind it. Together with a waveguide, this let us make big sound from what looks like a thin speaker."

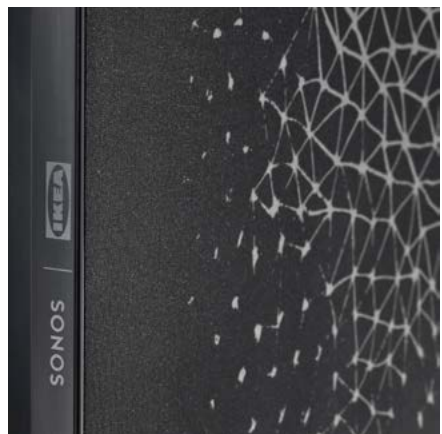
Like all other SYMFONISK speakers, the picture frame can be integrated with Sonos speakers and become a part of a bigger sound system.



Sound by Sonos

"Sound is a powerful partner in creating a sense of home. Like the soundtrack of your favorite movie, it creates an atmosphere that lets life take center stage."

Tad Toulis,
Sonos product design



Tune your room with Trueplay™

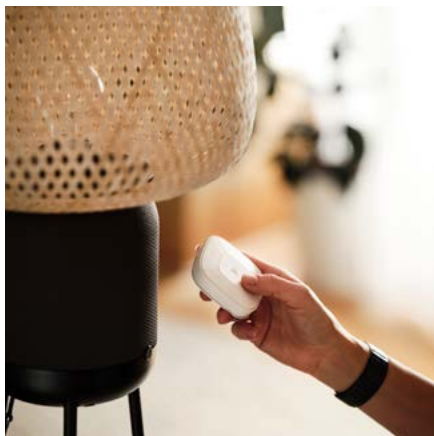
Every room is different. With Trueplay tuning, you can put your Sonos speakers wherever you want. Trueplay analyzes room size, layout, décor, speaker placement, and any other acoustic factors that can impact sound quality. Then it literally adjusts how each woofer and tweeter produces sound in that room (works on mobile devices running iOS 8 or later)*.

*iPhone, iPad or iPod Touch is needed to setup Trueplay



Sound remote

Put on the right tune for all occasions – from the kitchen, bedroom or wherever you are at home. With the SYMFONISK sound remote, you control SYMFONISK speaker and other Sonos speakers from the entire home. Adjust and control one speaker, or a group of speakers, from anywhere in your home. The sound remote talks to your speakers via the DIRIGERA hub, the heart of your smart home.



Works with

SONOS

The Works with Sonos badge certifies products that seamlessly connect with the Sonos Home Sound System.



SONOS

Download the Sonos app to set up your SYMFONISK speakers and start streaming music from all devices – smartphones, tablets, and computers. When friends come over they can download the app and play DJ, too.

 Download on the
App Store

 GET IT ON
Google Play

SONOS

